

# The Tri-Fecta U.S. Workforce 2024 and beyond >

Represents 60% of  
potential Labor Force

That must compete in the Price:Value-driven Global Economy.  
"We cannot control the world around us or the People in it, but we can control their impact on our options and opportunities." – D.D. John

## LEVEL 1 > Producers of Globally Competitive Trade Goods



D.D. JOHN, iCOPE  
• PRAGMATIC ENVISIONARY  
• SCHOLASTIC ENGINEER  
VIP 3-STEP PREP MENTOR

### Ambient Thinkers > Adapters (Visualizers)

**Driven by:** Their Right-Brain-based Ambient Intelligence. Can see, grasp and respond appropriately, while connecting/supervising/managing the active components of a Situation or Circumstance (aka: its Context).

**Comprised of:** Pragmatic Envisionaries + Envisionary Enterprises who use A.I. + Augmented Reality + Fuzzy Logic + Smart Guessing to Beta-test their Principle-based Perspectives, including Maintenance/Repair Personnel of Automating Tools + AR Systems + Supply Chains + Distributors + R&D + Agriculture. (Those with Ys Intellectual Skill Sets/Tools and the ability to adapt DIY On-the-Fly.)

Virtual Intellect Prep (VIP) 3-Step Prep —  
The only source for DIY–Mentored–Envisionary  
Prepping =>VirMotely available in the USA today



**18% of U.S. Workforce**

> Can Manage/Connect 36+ Dots to build a Visceptual = Big Picture with multiple Concepts-In-Context

## LEVEL 2 > Producers/Purveyors of Domestic Products and Services

### America's A.I. Automated, Repetitive Task/SOP-driven Workforce

**Powered by:** Cognitive Intelligence-based A.I. > SOP Programmed > Task/Activity-oriented Curators > Replicators and Domestic Maintenance Services/Tools.

**Comprised of:** Single-task robotics + table-top WiFi Devices + Droids > and NOW + Automaton = Tesla's Optimus > that will replace/reduce the cost of U.S. College/University/Grad-School Automaton and their Cognitive Intelligence-based Critical/Binary Thinking that is losing the Global Economic Competition (as the U.S. Trade Deficit + National Debt + Federal Reserve Debt, that is subsidizing Bank/Credit Card Services, so testify).

**24% of U.S. Workforce**

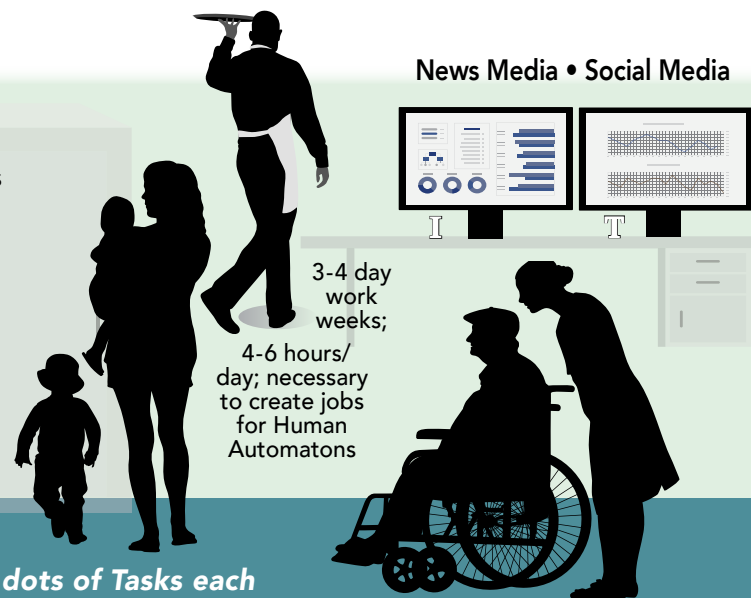
> Programed to manage up to 12 Dots of a single Big Picture Project

## LEVEL 3 > Providers of Personal Services

### Professional/Personal/Public Services (Verbalizers)

**Driven by:** Their Left-Brain-based Cognitive Intelligence = Binary/Critical Thinkers who rely-on Data, Dogma, SOP, Pundits, Pedagogues, VocEd + Superstition for direction. So says "Science" backed by a Nobel Prize in Physiology and Medicine (Roger Sperry, CalTech, 1981, Father of Left:Right Brain Balance).

**Comprised of:** Sales (commissioned and salaried) > Societal Maintenance > Child Care (includes U.S. schooling) > Public Employment (includes non-Profit and Taxpayer-subsidized Entities) > Managers/Administration/Curators/Clerical (follow SOP) > Entertainment > Food and Beverage > Retail > Hospitality > Care Givers > Commercial/Residential Maintenance/Repair.



News Media • Social Media

3-4 day  
work  
weeks;

4-6 hours/  
day; necessary  
to create jobs  
for Human  
Automaton

**58% of U.S. Workforce**

> Schooled to-manage up-to triple Assignments comprised of up-to 8 dots of Tasks each



YsUpAmerica.com built/hosts the DIY Curriculum for VIP 3-Step Prep  
WEBSITE: [www.YsUpAmerica.com](http://www.YsUpAmerica.com) > EMAIL: [jcomer@ScholasticEngineering.com](mailto:jcomer@ScholasticEngineering.com)

©2022. Copyright. John M. Comer and/or Jill C. Applegate / Scholastic Engineering, LLC. All rights reserved. [info@ScholasticEngineering.com](mailto:info@ScholasticEngineering.com)